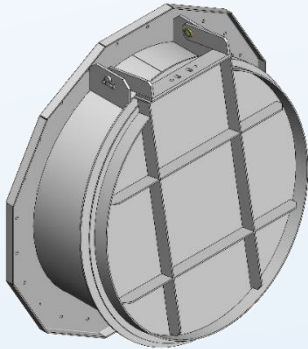


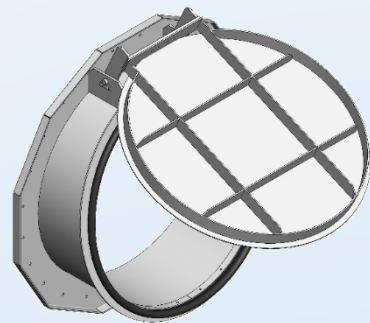
## FLOW CONTROL EQUIPMENT

### + ARM.PLUS ARMATURES



ARM.PLUS (ARM+) Armatures are designed to serve to a wide variety of duties. Selection of the correct armature to suit the duty is important to overcome the design criteria and provide the most cost-effective solution.

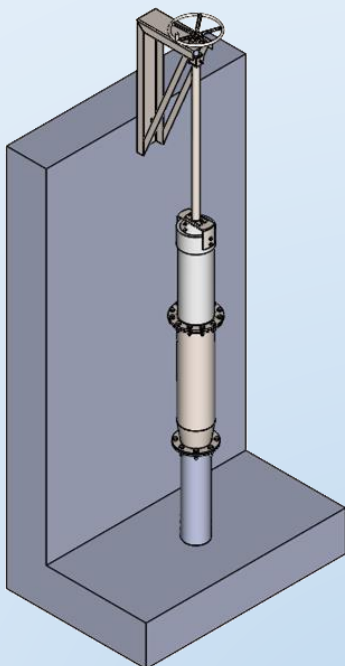
Water flow control armatures with associated operating equipment will outfit the most demanding specifications and applications. The range of available operating equipment is extensive; from simple direct operation by hand wheel to complex control systems by electrical actuation.



ARM+F Flap Valves are the most commonly used non-return valves. Purpose of using a flap valve is to let flow in one direction while blocking in the counter direction. The construction is lightweight but very robust in its design. The valve will automatically open when direct pressure applied to it and will be closed when the pressure is released.

Applications for ARM+F Flap Valves include isolation and prevention of backflow in chambers, tanks, manholes, control structures, outfall and drain piping. Flap valves are also used as ground water relief valves in concrete tanks to protect tanks drained for maintenance or repair from floating or rupturing by permitting ground water flow back into the tank.

ARM+F Flap Valves can be mounted to a flat or angled wall. They can also be suited for mounting onto a pipe flange.



ARM+T Telescopic Valves are used to adjust the liquid level in the tank by the help of two tubes sliding within each other. The upper tube is raised or lowered via a linkage to the control unit and thus establishes the desired water level.